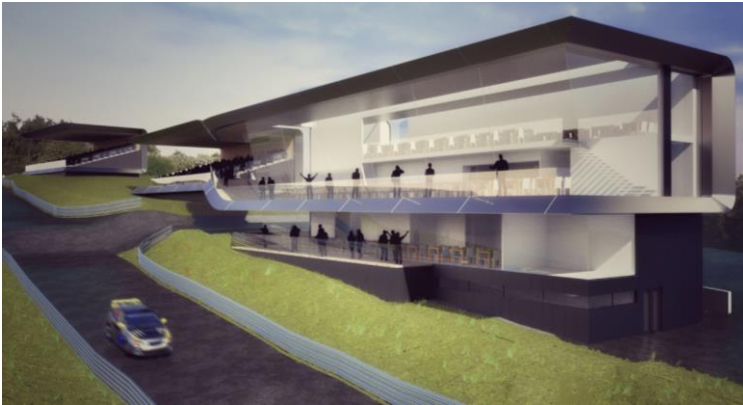




Race Start Building



VIP Building



Lydden Hill Race Circuit - Kent

Alexander Sedgley were appointed by the circuit to provide a master plan and design a series of new public, competitors, management and officials buildings, commencing with a new race start building.

A contemporary aerodynamic form was conceived with a curved aluminium cladding feature, which made reference to the variety of motors which lap the circuit. Large areas of structural glass were designed to allow the race start officials and time keepers strategic views of the various events. Also included was a terrace for national and international officials and team sponsors.

The steel frame, structural glazing and rain screen had to be completed in 12 weeks and was inaugurated in time for the world rally championships held at the circuit in 2014.

A family of new circuit buildings have also been designed and conceived to regenerate this historic race venue, which includes a VIP building, grandstands, officials/scrutineers control offices along with workshop units.

A planning application will be submitted in 2015 to Dover District Council following lengthy public consultation and environment impact studies.

Architects: Alexander Sedgley Ltd

Contractor: RI Works Ltd

Structural Engineer: William Atwell & Partners

Fit Out : Lydden Hill works team