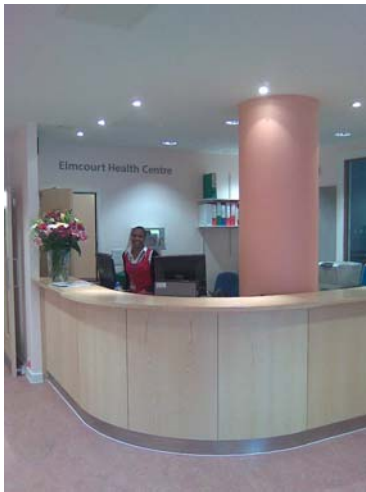




Waiting area



Reception



Curved stair

## Norwood Polyclinic Tulse Hill, London

Lambeth PCT were offered the ground and lower ground floor of a new residential development as a result of a planning agreement. The brief for the new 1,500m<sup>2</sup> space was to provide a wide range of clinical and non-clinical services. The polyclinic was also to provide new premises for a GP practice relocating from a nearby Victorian house and the local PCT.

The fit-out of the unit was conceived to provide a physical link between the health centre and GP surgery but with each having the capability of operating as a self contained unit. By introducing a spine corridor this future potential was satisfied.

Flexibility of room spaces was achieved by grouping of highly serviced clinical spaces around a diverse range of clinical and non-clinical services including dentistry, podiatry, flexible treatment rooms and minor operations.

Due to the proximity of the main line rail track adjacent to the site, the acoustic operation of the fabric was critical. In conjunction with a high performance specification, a ventilation system which recycles waste energy provides a sustainable strategy to ensure comfort conditions within the deep plan working environment.

A feature curved stair, which reflects the geometry of the building, links the non-public areas between ground and lower ground floors. Controlled access via a secondary stair and lift provides staff access to the administrative zone, providing a flexible community base supported by hot desking and break out rooms.

**Contractor:** Mizen

**Services Engineer:** WilkinsonMcKenzie

**Project Manager:** TPMC

