



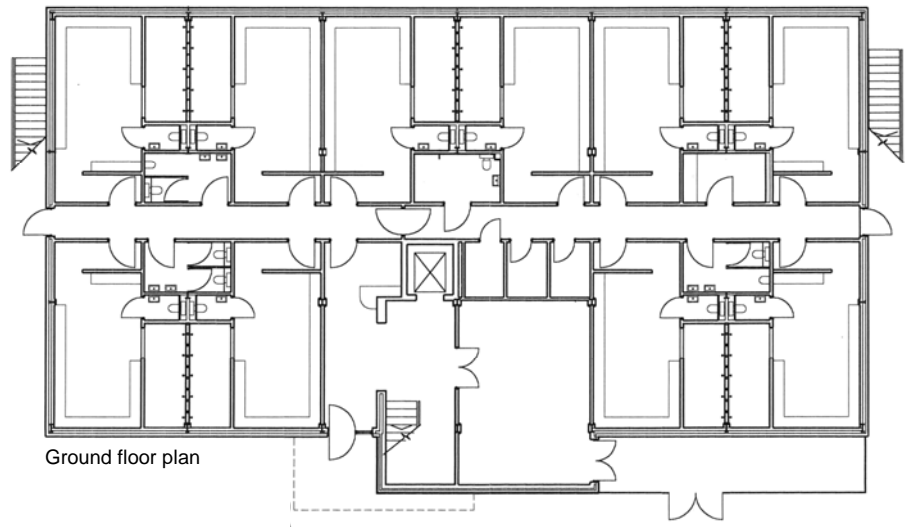
Entrance canopy



Function hall



Main entrance



Ground floor plan

Footscray Sports and Social Club Eltham, Greater London

In 1998 Alexander Sedgley were approached by Footscray Rugby Club to help them prepare a proposal for a new building in Footscray Road, Eltham, London SE9. The new premises was to provide accommodation for the existing rugby club, two associated football clubs and three cricket clubs. The brief required ten changing rooms with toilet facilities. On the first floor it was proposed to build the social facilities which would include the main club bar and multi-purpose function room.

Following planning approval, the hard work began as the club prepared its bid for funding. This proved, as in most cases, to be a fairly protracted event with Sports England and Alexander Sedgley working together to create the optimum layouts for the building. In late 1998, the Club was successful in receiving a sports lottery grant to rebuild. A contract was let to a medium sized regional builder, CMA Construction, in the sum of **£653,000**. The project was completed in **1999** to much acclaim, and the Club is increasing in membership. The particularly successful elements of the building relate to the balcony and its viewing relationship to the playing fields and ease of access to the Club bar.

Contractor: CMA Construction
Structural Engineer: AA Gibbons
Services Engineer: KW Consulting
Quantity Surveyor: M Kelly Associates